



LUBRICANTS.
TECHNOLOGY.
PEOPLE.



Open Gear Services

MOVING YOUR WORLD

About FUCHS

FUCHS is a global brand with a German heritage that has developed, produced and sold lubricants and related specialties for more than 90 years. Comprising of 58 companies and more than 5,800 employees worldwide, the FUCHS Group is a leading independent supplier of lubricants.

The FUCHS product program comprises more than 10,000 products and related services across multiple categories including:

- **Automotive Lubricants**
- **Industrial Lubricants**
- **Lubricating Greases**
- **Metal Processing Lubricants**
- **Food Processing Lubricants**
- **Special Application Lubricants; and,**
- **Services**

Along with its Sunshine (VIC) facility, FUCHS Lubricants (Australasia) Pty. Ltd. produces a selection of its products within its 25,000 square metre purpose built Beresfield (Newcastle, NSW) plant.

Keeping in line with its core values, both FUCHS facilities manufacture products using high-quality materials and cutting-edge technology whilst also adhering to industry leading environmental and manufacturing policies and requirements.

Working close with its customers, FUCHS develops holistic, innovative and custom-made solutions for a variety of applications.

And while that means the company is perfectly positioned to respond to the immediate needs of its customers - particularly in emergency situations - it also proudly means jobs for Australians.

As a lubricant manufacturer, FUCHS stands for performance, sustainability, safety, reliability and efficiency.

FUCHS LUBRICANTS. MOVING YOUR WORLD.

Wayne Hoiles

Regional Vice President
Australasia, India & Southeast Asia



Contents

ABOUT FUCHS' OPEN GEAR DIVISION	4
--	----------

OPEN GEAR SERVICES

Operational Inspection	7
Static Inspection	8
Thermography	9
Fatigue Repair	10
Non Destructive Testing - Magnetic Particle Inspection (MPI)	11
Inspection Reporting	12
Reconditioning	14
Dynamic Lubricant Removal	15
Dynamic Alignment	16
Gear Refurbishing	17
Lubrication Systems	18
Bulk Containers and Heaters	20
Pumping Stations, Lube Ancillaries	22

PRODUCTS


CEPLATTYN® GT 10	25
CEPLATTYN® GT 30	26
CEPLATTYN® SF 30	27
CEPLATTYN® GT RN	28
CEPLATTYN® GT P	29
CEPLATTYN® KG 10 HMF 2500	30
CEPLATTYN® KG 10 HMF 1000	31
CEPLATTYN® KG 10 HMF	32
CEPLATTYN® 300	33
CEPLATTYN® RN	34
CEPLATTYN® CLEANER	35
STABYL L-TS MO	36
STABYL 300 AL 2	37
STABYL HD	38
STABYL ECO EP 2	39

About FUCHS Open Gear Division

For over 30 years, the FUCHS Open Gear Division has provided CEPLATTYN Open Gear Lubricants, expert technical service and specialised lubricant systems to ensure maximum protection, performance and longevity of the critical gear drives utilised in the Australasian material processing/grinding industries.

The Fuchs Open Gear Division is a team of trade qualified mechanical fitters and technicians. We are solely committed to the lubrication and maintenance of Open Gear Drives.

The FUCHS Open Gear Division team members are strategically located around Australia. The team currently supply and service over 200 machines across Australasia with world renowned CEPLATTYN Open Gear and STABYL products.

- 
- A map of Australia is shown on the right side of the page. It is populated with colored dots representing FUCHS Open Gear locations. Most dots are red, indicating serviced sites. There are a few yellow dots representing technicians and a few green dots representing warehouses. The dots are distributed across the country, with a higher concentration in the eastern and southern regions.
- FUCHS Open Gear Technicians
 - FUCHS Serviced Sites
 - FUCHS Open Gear Warehouses



Open Gear Division Services Overview

FUCHS' Open Gear Division is a team of dedicated technicians who service and support a large area maintaining Open Gear Drives and critical bearings.

The Open Gear Division provides extensive inspection and comprehensive reporting of your gear drive. This includes on line drive train vibration and temperature assessment including still and video thermography by trained and certified technicians. Static examination includes wear assessment by tooth profile measurement, lubrication system functionality tests and tooth surface photographic documentation.

Detailed inspection and repairs such as technical gear inspections and reporting, condition monitoring, gear tooth refurbishment, Magnetic Particle Inspection, fatigue removal, dynamic gear cleaning, running in and lubrication systems just to name a few.

Contact your local FUCHS Open Gear Technician to experience what FUCHS can do for you.

OUR SERVICES



Operational Inspections

An operational inspection of your equipment Open Gear Drive provides a dynamic “snapshot” of the gear set and drive train conditions.

These inspections include examination and photographic documentation of the Pinion and Girth gear under strobe light conditions. Drive train bearing vibration values are recorded using RMS equipment and temperature assessment is performed to confirm dynamic gear alignment using infra red thermometer plus still and video thermography.

The lubrication system is functionality tested and displacement measured to ensure correct consumption regimes.

All conditions observed are documented and trended in detailed reports with relevant comments and recommendations provided by technicians who are trained and certified in all areas of the inspection performed.



OUR SERVICES

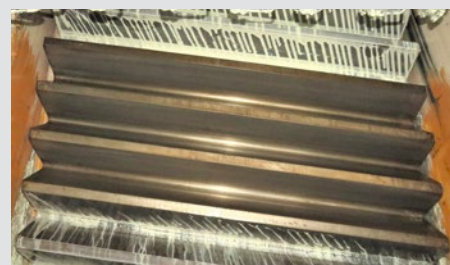
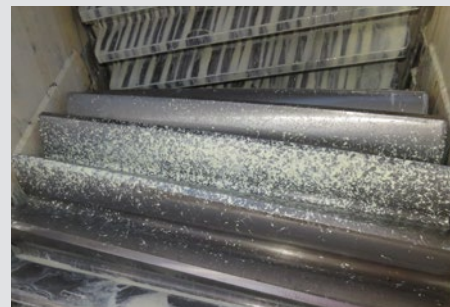


Static Inspections

A static inspection of your machines Open Gear Drive provides a detailed document of the gear set conditions.

The inspections provide detailed assessment of the Pinion and Girth gear (contact and non contact surfaces) and includes photographic documentation. Measurement of the Pinion tooth profile is performed and data is trended against original and previous inspections to assess for surface wear.

Static/manual checks of the lubrication system are also performed measuring the total weight of the lubricant per cycle to confirm consumption regimes. All conditions observed are documented in detailed reports with relevant comments and recommendations provided by technicians who are trained and certified in all areas of the inspection performed.



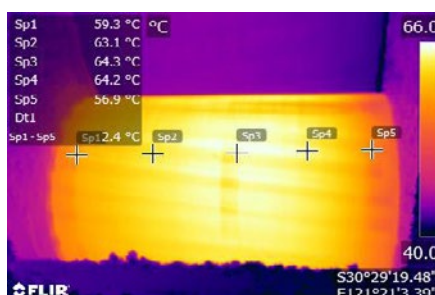
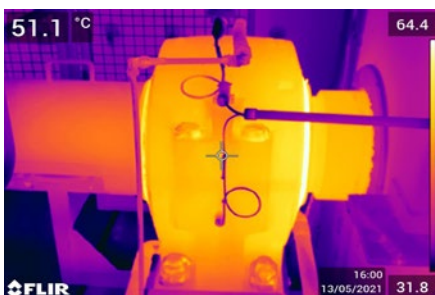
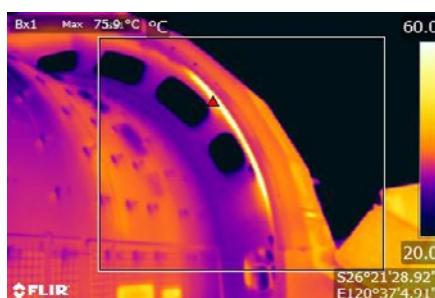
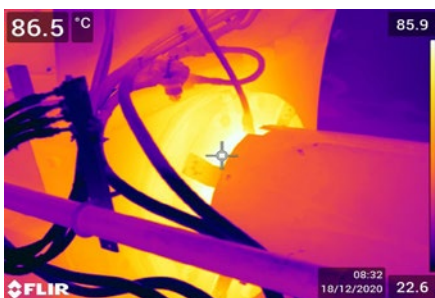


Thermography

Examination of your machine and Open Gear Drive using THERMOGRAPHY can assist in ensuring the longevity of your equipment.

Fuchs Open Gear technicians can provide Thermographic still and digital video of the operational gear drive to assess for thermal deviations in the dynamic gear set.

This method of examination can assist in highlighting contact and run out errors and also dispel “false misalignment indications” that can occur due to hot drive train bearings or tight seal conditions.



OUR SERVICES



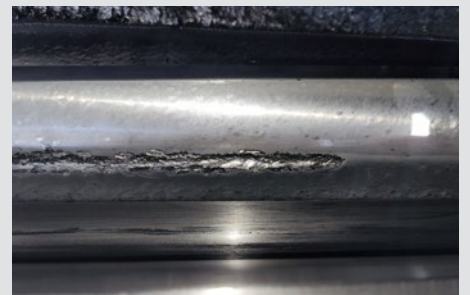
Fatigue Repair

Open Gear surface fatigue may be attributed to many factors however dynamic misalignment or overloading of a gear region is the primary cause.

Operation of the Open Gear with this condition can cause rapid degradation of the gear surface, reduced gear longevity, tooth outbreak and therefore additional costs in machine parts, repairs and costly downtime.

Removal of fatigue by precision mechanical grinding and blending of the region is known to slow the gear deterioration and extend component life.

Fuchs Open Gear Technicians can perform this specific gear repair as well as providing detailed reporting of the fatigue cause and suggested remedial course of action to maximise gear longevity.

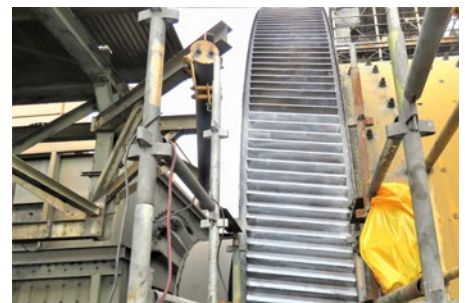




Magnetic Particle Inspection

As part of our commitment to maintaining your critical path machines, Fuchs can provide the Non-Destructive Inspection process Magnetic Particle Inspection (MPI).

If areas of concern are identified during this detailed gear assessment our technicians can perform specialist crack / fatigue relief to effected areas to ensure expert remedial action is performed without delay.

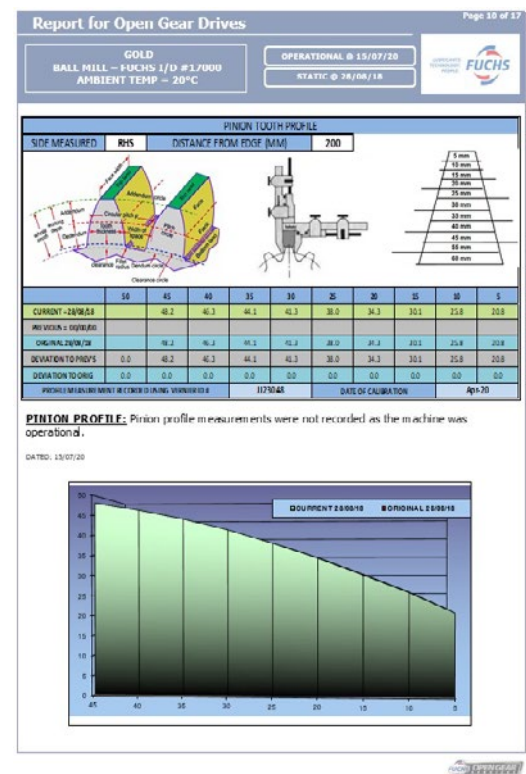
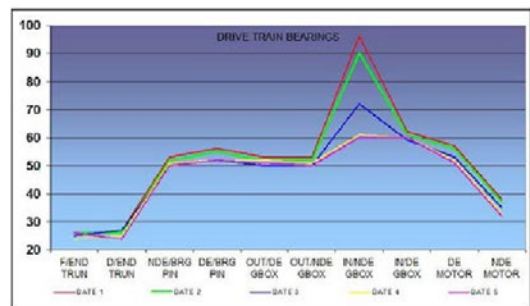
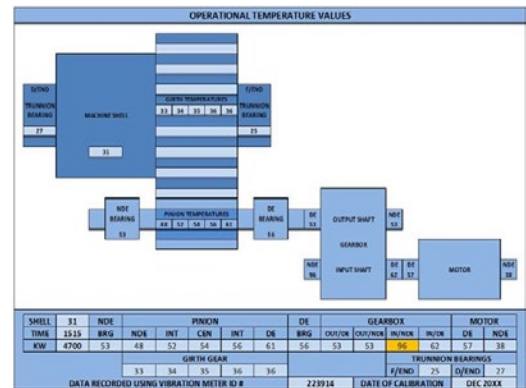


Inspection Reports

Fuchs Open Gear Lubricants and Technical Services are supplemented by our highly detailed inspection reports that enhance your own site maintenance practices to protect your critical path assets and prevent unscheduled downtime.

Fuchs Open Gear Division service engineers are all technical trade qualified and certified; their sole focus is ensuring the maximum longevity of your rotating equipment gear drive.

Fuchs Open Gear reports are written by qualified service engineers ensuring you receive credible information that is used by many of our customers to satisfy their warranty and insurance obligations.



Report for Open Gear Drives

COMPANY - SITE
MACHINE # / ID
AMBIENT TEMP = 36 DEGREES C

OPERATIONAL DD 00/00/0000

STATIC DD 00/00/0000

Page 1 of 16



CUSTOMER INFORMATION

HEAD COMPANY	EXAMPLE
COUNTRY	AUSTRALIA
PLANT NAME	EXAMPLE
ATTENTION TO	

MACHINE INFORMATION

MACHINE TYPE	SAG
MANUFACTURER	
YEAR OF MANUFACTURE	2002
RATED POWER (KW) / (HP)	6000 KW

LUBRICANT INFORMATION

LUBRICANT MANUFACTURER	FUCHS LUBRITECH
LUBRICANT TYPE	CEPLATTYN GT 10
LUBRICATION SYSTEM	FUCHS 7 SPRAY
TYPE (DUAL LINE ETC)	SLV INJECTOR (PINION)

GEAR INFORMATION

GEAR TYPE	HELICAL
GEAR WIDTH (MM)	920
LOAD DISTRIBUTION (%)	98
MACHINE DOR (VIEW FROM DISCHARGE END)	CCW
NUMBER OF PINIONS	SINGLE
PINION GEAR NON CONTACT CONDITION	NEW
GIRTH GEAR NON CONTACT CONDITION	NEW

QUICK VIEW CONDITIONS

OPEN GEAR SURFACE CONDITION	
VIBRATION CONDITIONS	GEARBOX
TEMPERATURE CONDITIONS	
PINION PROFILE	
OPEN GEAR LUBRICATION SYSTEM	
OPEN GEAR LUBRICANT	
BEARING LUBRICANT	
BEARING LUBRICATION SYSTEM	LEAK

QUICK VIEW LEGEND

ALERT	WARNING	OK	NOT CHECKED
-------	---------	----	-------------

NAME OF TECHNICIAN
DATE OF LAST INSPECTION TUESDAY 00/00/000



OPERATIONAL PINION GEAR



OPERATIONAL GIRTH GEAR



LUBRICANT SPRAY APPLICATION PATTERN

OUR SERVICES

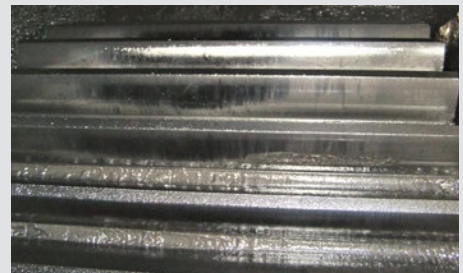


Reconditioning

Gear Reconditioning is a type of forced Running In and is an aggressive form of conforming the gear surfaces in a short period of time.

Reconditioning can be used to correct different gear conditions such as reduce localised surface loading, smooth surface conditions after remedial repairs and to reduce gear related vibration.

Due to the aggressive effects of the product, Gear Reconditioning can only be performed by trained and experienced Fuchs Open Gear Technicians.

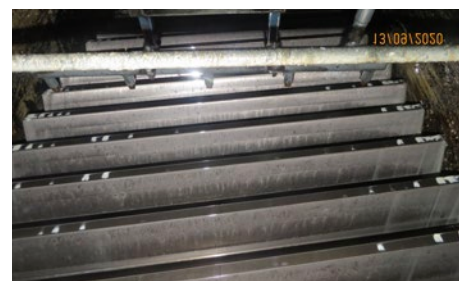
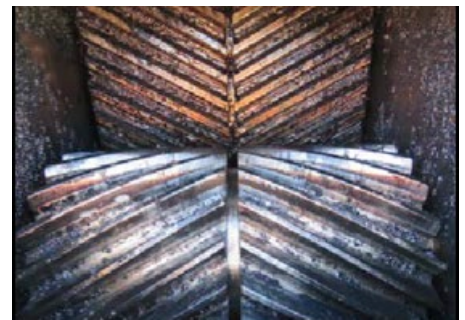




Dynamic Lubricant Removal

As part of our commitment to maintaining your critical path machines, Fuchs can provide lubricant removal from your dynamic Open Gear Drive.

Dynamic Lubricant removal helps to reduce your machine downtime when maintenance activities require clean gear surfaces, such as Non Destructive Inspection, Gear resurfacing, Gear removal etc.



OUR SERVICES

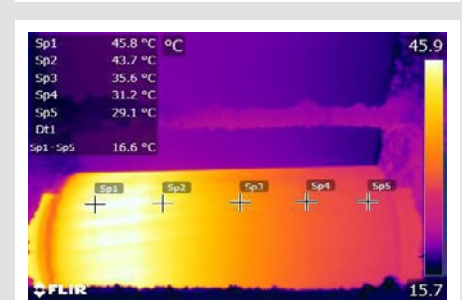
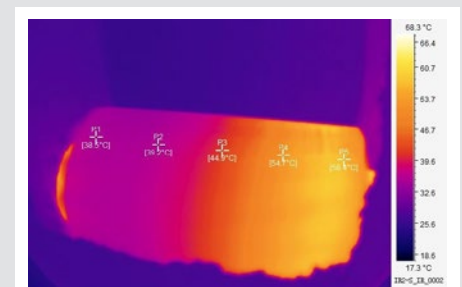
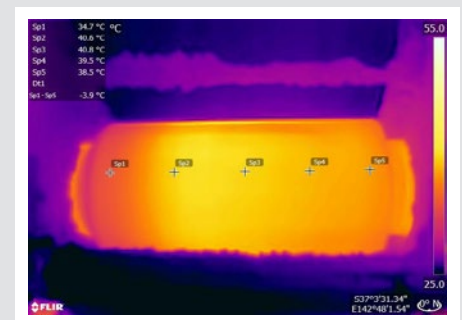


Dynamic Alignment

Correct Open Gear Drive dynamic alignment is critical to the longevity of your equipment. Operation of the gear drive with an excessive load bias indicated as a large temperature differential across the Pinion can lead to surface scuffing / scoring, surface fatigue and premature gear failure.

Even if the gear parallel alignment is correct at setup, influences such as machine load and power will effect the “dynamic” alignment of the gear set and correction via shim or horizontal movement is normally required.

FUCHS' Open Gear Technicians can check current conditions, detail the required mathematical correction, perform the adjustment and then monitor after restart to ensure acceptable load distribution is achieved.





Gear Refurbishing

Damage or wear sustained to a machine Girth gear may be cause for this very costly gear component to be reversed or replaced involving many hours of downtime, specialist labour and equipment hire.

Dependant on the conditions, the Girth gear may be hand sanded to enable further operation of the machine on this gear surface providing additional longevity, this repair is called Gear Refurbishing.

FUCHS' Open Gear Technicians can perform this specific gear rectification providing a reduced cost alternative to reversal or replacement if the Girth gear is deemed retrievable.



OUR SERVICES

Lubrication Systems

DESIGNED FOR MAINTENANCE "PEACE OF MIND"

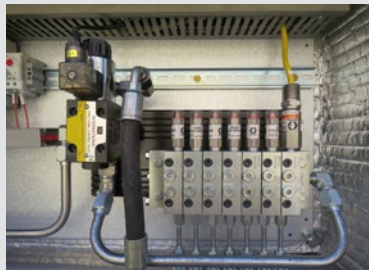
The FUCHS Lubricants Lubrication Systems provides "Peace of Mind" by ensuring optimum protection of one of the most critical site assets — your machine Open Gear Drive and critical bearings.

The system is enclosed in IP65 rated STAINLESS STEEL cabinets and comprises of an Allen Bradley stand alone PLC incorporating an easy-to-use colour AB Panel view.

Protection of the gear drive and/or machine bearings is provided by full component monitoring, visual and audible alarms, a shutdown timer set to your specific needs in case of a detrimental fault and can include on screen system diagnostics via an integrated HMI panel.

Suitable for all Open Gear, bearing and bearing seal applications including grinding mills, rotary kilns, crushers etc.

Fully customisable systems are available to suit site specific needs upon request. All these system are built to strict quality standards.





OUR SERVICES

Bulk Containers & Heaters

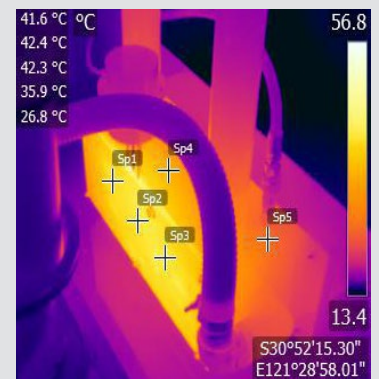
FUCHS Lubricants Bulk Containers are provided to our customers upon request and are more economical & environmentally friendly than drum supply.

The bulk containers hold equivalent to 3 x drums of lubricant therefore;

- Less lubricant drum change outs are required.
- Reduced risk of contaminants entering the lubrication system that may result in system blockages and equipment down time.
- Eliminates sites disposal of waste empty drums containing residual lubricant.
- Customer is only invoiced for lubricant required for replenishment of bin.
- Easily located using a forklift .
- Can be utilised to service one piece of equipment or as a central supply for multiple systems.
- Bulk containers remain the property of Fuchs Lubricants and are provided to the customer on request for the duration of any supply arrangement.
- Load cell can be purchased upon request.

FUCHS' Open Gear Division can supply heating for the winter months, a cost-effective jacket designed to maintain the core temperature of the lubricant within the bulk container to ensure effective pumping on even the coldest of nights.





OUR SERVICES

Pumping Stations, Lube Ancillaries

FUCHS Open Gear Division can supply fully bunded pumping station for site to meet its environmental requirement. The pumping station can be fully customised.

Additionally, FUCHS' Open Gear Division can supply our purpose-built heaters, Pump reservoirs, Pumps and ancillary fittings.

- Bunded tray design to meet environmental requirements.
- Pump reservoirs suit various grease pumps.
- Full sea container setup with bund, pump station heating.





OUR PRODUCTS



CEPLATTYN® GT 10

Light-coloured, high-viscosity adhesive lubricant with white solid lubricants for Open Gears.

CEPLATTYN GT 10 is a high-viscosity adhesive lubricant for heavy-duty Open Gears, e.g. on kilns, mills and driers in the raw materials industry.

CEPLATTYN GT 10 is based on a synthetic base oil, new types of additives, and a combination of white, reaction-effective solid lubricants.

This combination guarantees extraordinarily good wear protection and an extremely high lubricant film stability. CEPLATTYN GT 10 together with CEPLATTYN GT P (Primer) and CEPLATTYN GT RN (Running-In) represents the FUCHS LUBRITECH Multi-Phase Lubrication.

FIELDS OF APPLICATION

CEPLATTYN GT 10 has been especially developed for the application on Open Gears under critical operating conditions, such as low-speed kiln drives with increased tooth flank temperatures, mill drives with extreme drive power, and drives which are frequently operated under start-stop conditions.

CEPLATTYN GT 10 includes flame-retarding substances reducing the danger of ignition, e.g. on the hot kiln shell. Furthermore CEPLATTYN GT 10 has a restricted flowability outside the meshing and is thus prevented to a large extent from leaving the gear guard.

As opposed to conventional fluids CEPLATTYN GT 10 develops a thick lubricating film on the tooth flank which does not flow off of the metal surface, not even after a stoppage of the equipment. Thus CEPLATTYN GT 10

reliably protects from wear in the starting phase of the equipment which can happen with conventional fluids.

The high portion of reaction-effective white solid lubricants prevents a seizure of the tooth flanks even in unfavorable lubricating and meshing conditions.

CEPLATTYN GT 10 meets the requirements of AG-MA 9005-E01 / D-2.

METHOD OF APPLICATION

CEPLATTYN GT 10 is suitable for the application in immersion bath, circulation lubrication and spraying systems. In terms of spraying applications a heating system is recommended with ambient temperatures below +10 °C/+50 °F.

FEATURES

- temperature range: 0/ +140 °C / +32/+280 °F
recommended application temperature: >+10°C/+50 °F
- excellent wear protection
- very good dry running properties
- unlimited suitability for kiln and mill drives
- no self-ignition on the hot kiln shell
- thick lubricating film
- very good lubricating film stability on the stationary tooth flank
- free of solvent and bitumen.

Approvals and references available upon request.

OUR PRODUCTS

CEPLATTYN® GT 30

Light-coloured, very high-viscosity adhesive lubricant with white solid lubricants for Open Gears.

CEPLATTYN GT 30 is a very high-viscosity adhesive lubricant for heavy-duty Open Gears, e.g. on kilns, mills and driers in the raw materials industry.

CEPLATTYN GT 30 is based on a synthetic base oil, new types of additives, and a combination of white, reaction-effective solid lubricants.

This combination guarantees extraordinarily good wear protection and an extremely high lubricant film stability. CEPLATTYN GT 30 together with CEPLATTYN GT P (Primer) and CEPLATTYN GT RN (Running-In) represents the FUCHS LUBRITECH Multi-Phase Lubrication.

FIELDS OF APPLICATION

CEPLATTYN GT 30 has been especially developed for the application on Open Gears under critical operating conditions, such as low-speed kiln drives with increased tooth flank temperatures, mill drives with extreme drive power, and drives which are frequently operated under start-stop conditions.

CEPLATTYN GT 30 includes flame-retarding substances reducing the danger of ignition, e.g. on the hot kiln shell. Furthermore CEPLATTYN GT 30 has a restricted flowability outside the meshing and is thus prevented to a large extent from leaving the gear guard.

As opposed to conventional fluids CEPLATTYN GT 30 develops a thick lubricating film on the tooth flank which does not flow off the metal surface, not even after

a stoppage of the equipment. Thus CEPLATTYN GT 30 reliably protects from wear in the starting phase of the equipment which can happen with conventional fluids.

The high portion of reaction-effective white solid lubricants prevents a seizure of the tooth flanks even in unfavorable lubricating and meshing conditions.

CEPLATTYN GT 30 meets the requirements of AG-MA 9005-E01 / D-2.

METHOD OF APPLICATION

CEPLATTYN GT 30 is suitable for the application in immersion bath, circulation lubrication and spraying systems. In case of spraying applications, a heating system is recommended with ambient temperatures below +10 °C/+50 °F.

FEATURES

- temperature range: +0/ +140 °C / +32/+284 °F
recommended application temperature: > +10°C/+50 °F
- excellent wear protection
- very good dry running properties
- unlimited suitability for kiln and mill drives
- no self-ignition on the hot kiln shell
- thick lubricating film
- very good lubricating film stability on the stationary tooth flank
- free of solvent and bitumen.

Approvals and references available upon request.

CEPLATTYN® SF 30

Sprayable, extremely high-viscosity lubricant for Open Gears. Free of solvents and bitumen.

CEPLATTYN SF 30 is An extremely high-viscosity adhesive lubricant for heavy-duty Open Gears drives.

CEPLATTYN SF 30 consists of new types of synthetic oils and special additives to optimize wear protection and lubricating film stability. CAPLATTYN SF 30 does not contain any kind of bitumen and solvent.

The extremely high base oil viscosity guarantees a stable lubricant film between the tooth contact flanks being in contact, thus resulting in an outstanding performance. Even if the lowest amount of lubricant is used.

CEPLATTYN SF 30 together with CEPLATTYN GT P (Primer) and CEPLATTYN GT RN (Running-In) represents the FUCHS LUBRITECH Multi-Phase Lubrication.

FIELDS OF APPLICATION

CEPLATTYN SF 30 guarantees reliable running conditions of the gear drive. Compared with conventional adhesive lubricants, considerable savings are possible when using CEPLATTYN SF 30.

CEPLATTYN SF 30 is especially formulated for extremely heavy-duty Open Gear drives exposed to high shock loads.

CEPLATTYN SF 30 meets the demands according to the AGMA Standard for Open Gear drives.

CEPLATTYN SF 30 is according to ANSI the current version of AGMA 9005-E, Paragraph D-2 (formerly AGMA 13EP and 13S), CEPLATTYN SF 30 has been approved by CITIC, FLSmidth, KHD Humboldt Wedag, Metso and Outotec.

METHOD OF APPLICATION

CEPLATTYN SF 30 is suitable for the application in immersion bath, circulation lubrication and spraying systems. In terms of spraying applications, a heating system is recommended with ambient temperatures below +15 °C/+60 °F.

FEATURES

- temperature range: +15/ +120 °C / +60/+250 °F
application temperature: > +25°C/+ 77 °F
- excellent protection against wear
- good EP properties
- excellent adhesion
- guarantees maximum equipment availability
- causes no solid deposits
- very good lubricating film stability at minimum consumption

Approvals and references available upon request.

OUR PRODUCTS

CEPLATTYN® GT RN

Sprayable running-in lubricant for Open Gears.

CEPLATTYN GT RN is a running-in lubricant for Open Gear drives on Kilns and Mills in the raw materials industry.

Together with CEPLATTYN GT P and the operational lubricants of the CEPLATTYN GT range CEPLATTYN GT RN represents the FUCHS LUBRITECH Multi-Phase-Lubrication system for Open Gear drives.

FIELDS OF APPLICATION

CEPLATTYN GT RN is used to smooth the tooth-surfaces of new installed girth gears and pinions and for optimisation of the load carrying pattern.

METHOD OF APPLICATION

CEPLATTYN GT RN is applied via automatic spray systems. The lubricant quantity should be 2-3 times higher compared to operational lubricant quantities. We also refer to our Instructions for running-in for large Open Gears.

FEATURES

- temperature range: -10 / +120°C application temperature >0°C
- smooth and reduces surface roughness
- improves tooth flank quality
- extends lifetime of the gears
- free of solvent and heavy metalst.

Approvals and references available upon request.

CEPLATTYN® GT P

Adhesive lubricant with white solid lubricants.

CEPLATTYN GT P is an adhesive lubricant based on a high-quality aluminum complex base grease with a combination of white solid lubricants.

FIELDS OF APPLICATION

CEPLATTYN GT P is used as priming lubricant for Open Gears. CEPLATTYN GT P is adapted to the CEPLATTYN GT and CEPLATTYN SF range of operational lubricants.

CEPLATTYN GT P is also ideally suitable as universal mounting paste in the raw materials industry and as wire rope lubricant. Further typical applications: Highly-loaded sliding surfaces with low sliding speeds such as: guide rails, slide rails and joints. Due to the high content of solid lubricants, CEPLATTYN GT P should not be used for the lubrication of roller bearings.

METHOD OF APPLICATION

CEPLATTYN GT P can be applied by spatula, brush or non fiber-cloth onto previously cleaned surfaces. Caution: CEPLATTYN GT P is not suitable for spray lubrication systems.

FEATURES

- temperature range: -30 / +140 °C
- very good adhesion
- prevents initial damage and scuff marks on Open Gears
- excellent protection against wear
- provides very good protection against corrosion
- water-resistant
- good mechanical stability
- protects against fretting corrosion.

Approvals and references available upon request.

OUR PRODUCTS

CEPLATTYN® KG 10 HMF-2500

Highly-viscous sprayable adhesive lubricant for Open Gear drives, free of heavy metals and chlorine.

CEPLATTYN KG 10 HMF-2500 is based on an especially selected high-viscosity base oil with aluminium - complex soap as a thickener. Its special additive package, which is free of heavy metals and chlorine, together with its content of the purest and finest colloidal graphite and adhesion additives results in exceptional performance.

CEPLATTYN KG 10 HMF-2500 is free of solvents.

CEPLATTYN KG 10 HMF-2500, CEPLATTYN RN and CEPLATTYN 300 represent the balanced system of the FUCHS LUBRITECH multi-phase lubrication.

FIELDS OF APPLICATION

CEPLATTYN KG 10 HMF-2500 is especially suited for shock loads in heavy-duty applications because of its high base oil viscosity and the resulting good cushioning effect. The high content of solid lubricants guarantees temperature stability of the lubricating film, even beyond the normal temperature range.

CEPLATTYN KG 10 HMF-2500 serves as an operating lubricant for Open Gear drives with extreme load peaks and especially in case of pre-damaged tooth flanks.

METHOD OF APPLICATION

CEPLATTYN KG 10 HMF-2500 is sparingly applied by commercially available spraying systems. At temperatures below +5 °C / + 40°F, additional measures have to be taken to ensure the sprayability, for instance heating.

Consumption is subject to the operational requirements.

FEATURES

- water-resistant
- temperature range: + 5 / +140 °C +40 / +280 °F
- excellent anti-wear properties
- outstanding adhesive properties
- very good corrosion protection properties
- high resistance to compression
- reduces tribocorrosion
- excellent cushioning effect
- excellent stability of lubricating film.

Approvals and references available upon request.

CEPLATTYN® KG 10 HMF-1000

Sprayable, high-alloyed, graphite-containing adhesive lubricant for Open Gears.

CEPLATTYN KG 10 HMF-1000 is based on a high-viscosity base oil mixture with aluminium-complex soap as a thickener. The purest and finest colloidal graphite included in CEPLATTYN KG 10 HMF-1000 and its special additive package provide CEPLATTYN KG 10 HMF-1000 with its unmatched properties.

CEPLATTYN KG 10 HMF-1000 together with CEPLATTYN RN and CEPLATTYN 300 represent the balanced system of the FUCHS LUBRITECH multi-phase lubrication.

FIELDS OF APPLICATION

CEPLATTYN KG 10 HMF-1000 can be used for heavy-load applications because of its high base oil viscosity and the resulting cushioning effect. The high content of solid lubricants guarantees temperature stability of the lubricating film, even if the normal temperature range is exceeded. CEPLATTYN KG 10 HMF-1000 serves as an operating lubricant for Open Gear drives, as primarily used in rotary kilns, ball mills for coal grinding, dryers, and large excavators, for example used in primary industries. Large chains, gear racks, and sliding surfaces in steel hydraulics construction can also be lubricated reliably.

METHOD OF APPLICATION

CEPLATTYN KG 10 HMF-1000 is applied by commercially available spraying systems.

FEATURES

- water-resistant
- temperature range: -10 / +140 °C +14 / +280 °F
- extremely high resistance to compression
- excellent anti-wear properties
- very good corrosion protection properties
- very adhesive
- reduces tribocorrosion
- good cushioning effect
- applicable by all conventional spraying systems.

Approvals and references available upon request.

OUR PRODUCTS

CEPLATTYN® KG 10 HMF

Sprayable adhesive lubricant for large Open Gears.

CEPLATTYN KG 10 HMF is based on a high-quality base oil, thickened with aluminium complex soap. The product contains colloidal graphite of the highest purity and fineness and in addition a carefully determined additive package, which is chlorine free and contains no heavy metals, together with adhesive additives.

Together with CEPLATTYN 300 and CEPLATTYN RN, CEPLATTYN KG 10 HMF forms one of LUBRITECH'S matched multiphase lubrication systems.

FIELDS OF APPLICATION

CEPLATTYN KG 10 HMF is used on the gear rim drives of tube mills, rotary kilns, dryers and crushers, which are to be found in the raw materials industry or the power station sector.

In addition, CEPLATTYN KG 10 HMF is suitable for the lubrication of chains and heavily loaded sliding guides in rough operating conditions, e.g. in the mining industry.

METHOD OF APPLICATION

CEPLATTYN KG 10 HMF is handled using standard spray lubrication systems.

FEATURES

- excellent protection against wear
- good resistance to water
- can be applied with all common spray lubrication systems
- forms adhesive lubricating film even at increased operating temperatures
- reduces tribocorrosion
- very good corrosion-preventive ability
- high scuffing load capacity
- extremely high-pressure resistance
- temperature range for use: -10 / +140 °C
- free from heavy metals, chlorine and solvents.

Approvals and references available upon request.

CEPLATTYN® 300

Primer for large Open Gears and for the lubrication of toothed racks and sliding surfaces.

CEPLATTYN 300 is a high-graphite adhesive lubricant based on a selected base oil and contains EP additives and tackiness improvers.

CEPLATTYN 300 is free of bitumen, heavy metals and solvents.

In combination with CEPLATTYN RN and CEPLATTYN KG 10 HMF, CEPLATTYN 300 represents the FUCHS LUBRITECH multi-phase system.

FIELDS OF APPLICATION

CEPLATTYN 300 is recommended as primer for large Open Gears, gear racks and sliding surfaces. It is also used as an assembly paste for screws/bolts and pins.

It is also suitable for wire rope lubrication and preservation as well as in steel hydraulics construction for chains, sliding surfaces, and gear tooth systems.

METHOD OF APPLICATION

CEPLATTYN 300 is applied manually on clean surfaces.

Note:

CEPLATTYN 300 also available in aerosol cans as CEPLATTYN 300 SPRAY.

FEATURES

- protects against corrosion
- temperature range of lubricant film: -30 / +250 °C
- dry film up to +500 °C
- excellent adhesion
- outstanding protection against wear
- forms a solid lubricant film under pressure
- forms a „dry“ lubricating film, which repels dust
- water-resistant.

Approvals and references available upon request.

OUR PRODUCTS

CEPLATTYN® RN

Sprayable running-in lubricant for Open Gears.

CEPLATTYN RN is based on a mineral base oil and an aluminium-complex soap as thickener. It is highly graphited, adhesive and sprayable. CEPLATTYN RN does neither contain bitumen nor solvent. In addition it is free of heavy metals and chlorine.

CEPLATTYN RN together with CEPLATTYN 300 and CEPLATTYN KG 10 HMF represent the FUCHS LUBRITECH multi-phase system.

FIELDS OF APPLICATION

CEPLATTYN RN can be applied to single and double pinion drives of any kind of tube mills and kilns, e.g. in cement works, fertilizer plants, combustion and compost units.

CEPLATTYN RN is applied to gear drives with high performance. Furthermore it is used when running under critical operating conditions, when having big tooth widths or when running with high speeds.

METHOD OF APPLICATION

CEPLATTYN RN is applied via automatic spraying systems: Spraying should be effected permanently and with highest possible quantity.

Running-in of gears should start only after best alignment of the gear. Primary lubrication of tooth flanks should be effected with CEPLATTYN 300, according to our INSTRUCTIONS FOR RUNNING IN.

FEATURES

- temperature range: -10 / +140°C
- reduces surface roughness to a minimum
- improves quality of tooth flanks
- extends life time of the gear
- free of chlorine and heavy metals.

Approvals and references available upon request.

CEPLATTYN® CLEANER

High performance maintenance fluid for cleaning operational Open Gear Drives.

CEPLATTYN CLEANER is a high-performance maintenance fluid, purpose built for cleaning Open Gears without downtime. Formulated with a unique blend of hydrocarbon solvents, high pressure lubricants and specialty surfactants, CEPLATTYN CLEANER is proven to lubricate during application. This eliminates downtime by allowing operation of the mill during the cleaning process.

APPLICATION

Apply CEPLATTYN CLEANER via spray nozzles directly onto the operating gears, typically via the inspection port. Prior to commencing the cleaning process, disable the lubrication system and prepare appropriate waste

catchment arrangements. During application monitor the cleaning progress and operating temperature of the gears using a strobe light and infra-red sensor. The high-pressure lubricant in CEPLATTYN CLEANER will maintain appropriate working temperatures of the ring gear and pinion during the cleaning process. Following approximately 40 minutes of application, commence a 15-minute grind out of the mill. The gears are now clean, and the machine is available for detailed inspection and maintenance as required.

Approvals and references available upon request.

OUR PRODUCTS

STABYL L-TS MO

High performance, lithium soap grease containing solid lubricants.

STABYL L-TS MO is a lithium soap grease composed of a semi-synthetic base oil. In addition to additives to increase the ageing resistance, it contains an additive package especially improving EP characteristics and ensuring an excellent corrosion protection.

FIELDS OF APPLICATION

STABYL L-TS MO is particularly suited for all plain and roller bearings subjected to high dynamic loads.

The combination of its stringiness and the extraordinary adhesion allows a very long grease life. Re-greasing intervals can be significantly extended when using STABYL L-TS MO.

METHOD OF APPLICATION

STABYL L-TS MO is suitable for initial filling or re-greasing using the usual methods (central lubrication systems, grease guns).

FEATURES

- excellent adhesion
- very good corrosion protection
- temperature range: -30 / +140 °C, short-term up to +150 °C
- high resistance to ageing and oxidation
- good thermal stability
- excellent worked stability
- good emergency lubrication characteristics.

Approvals and references available upon request.

STABYL 300 AL 2

Graphite-containing aluminium-complex grease with very good EP and high temperature properties.

STABYL AL 2 is a graphite-containing, mineral oil-based aluminium-complex grease with very good EP and high temperature properties. It is a universal grease for a broad range of applications including maximum specific loads, elevated and considerably fluctuating temperatures.

FIELDS OF APPLICATION

STABYL AL 2 is employed for the greasing of plain and roller bearings, guides subjected to extreme loads, very high and considerably fluctuating temperatures in, for example, the raw materials industry, chemical industry, iron and steel industry, general engineering, crushing and grinding mills, sintering plants, calendars, extruders, vibrating screens (hot and cold), earth moving machinery, etc.

METHOD OF APPLICATION

STABYL AL 2 is applied manually with suitable grease guns or via centralized lubrication systems.

FEATURES

- temperature range: -20 / +150 °C, short-term up to +180 °C
- excellent pressure absorbing capacity
- good wear protection
- high thermal and ageing stability
- good resistance to water
- reliable corrosion protection
- thermally and mechanically reversible
- good working stability

Approvals and references available upon request.

OUR PRODUCTS

STABYL HD

EP grease for highly loaded plain and roller bearings operating under extreme conditions.

STABYL HD is a heavy-duty lithium soap grease containing a highly viscous base oil and wear-reducing EP additives and solid lubricants.

FIELDS OF APPLICATION

STABYL HD is primarily used in heavy equipment engineering, e.g. to lubricate large, low-speed roller bearings (self-aligning roller bearings) in roller mills and presses and plain bearings subject to high surface pressures.

METHOD OF APPLICATION

STABYL HD is mainly applied via centralized lubrication systems.

FEATURES

- protects against corrosion
- reduces wear
- temperature range: -10 / +120 °C
- high resistance to aging
- excellent emergency lubrication
- good pressure absorption due to the high base oil viscosity

Approvals and references available upon request.

STABYL ECO EP 2

Environmentally harmless plain and roller bearing grease.

STABYL ECO EP 2 is a multi-purpose grease based on rapidly biodegradable ester oil, thickened with a lithium/calcium soap.

FIELDS OF APPLICATION

STABYL ECO EP 2 is used for the total-loss lubrication of plain and roller bearings subject to high and fluctuating loads, in a wide temperature range e.g. in

- general engineering,
- construction machinery,
- steel hydraulics construction,
- inland water transportation,
- sewage treatment,

METHOD OF APPLICATION

STABYL ECO EP 2 is applied manually or via commercially-available lubricating systems.

FEATURES

- good corrosion protection
- water resistant
- good adhesion
- temperature range: -40 / +120 °C, short-term up to +130 °C
- excellent EP-properties
- good work stability
- resistant to ageing

Approvals and references available upon request.

German Technology, Australasian Commitment.

95% of products sold in Australia and New Zealand
are manufactured in Australia

1700 lubricants and related specialties

290 employees

2 world class production plants and laboratories being the
only Australian manufacturer to produce lubricants, coolants,
greases and additives



FUCHS LUBRICANTS (AUSTRALASIA) Pty Ltd

Head Office Melbourne

49 McIntyre Road, Sunshine Victoria 3020

Phone: 1800 1800 13 Fax: 1800 1800 14

Email: CustomerService-AU10@fuchs.com

Newcastle

40 Elwell Close, Beresfield NSW 2322

Phone: 02 4969 0444 Fax: 02 4969 0401

Perth

1A / 56 Fawcett Crescent, Perth Airport WA 6105

Phone: 08 9365 6565 Fax: 08 9365 6500

fuchs.com.au

This brochure is accurate in information to the Fuchs Lubricants product range at the time of printing. Fuchs Lubricants reserves the right to make changes at any time without notice. Details also available from your Fuchs Lubricants representative. Copyright FUCHS Lubricants (Australasia) Pty Ltd. April 2023.